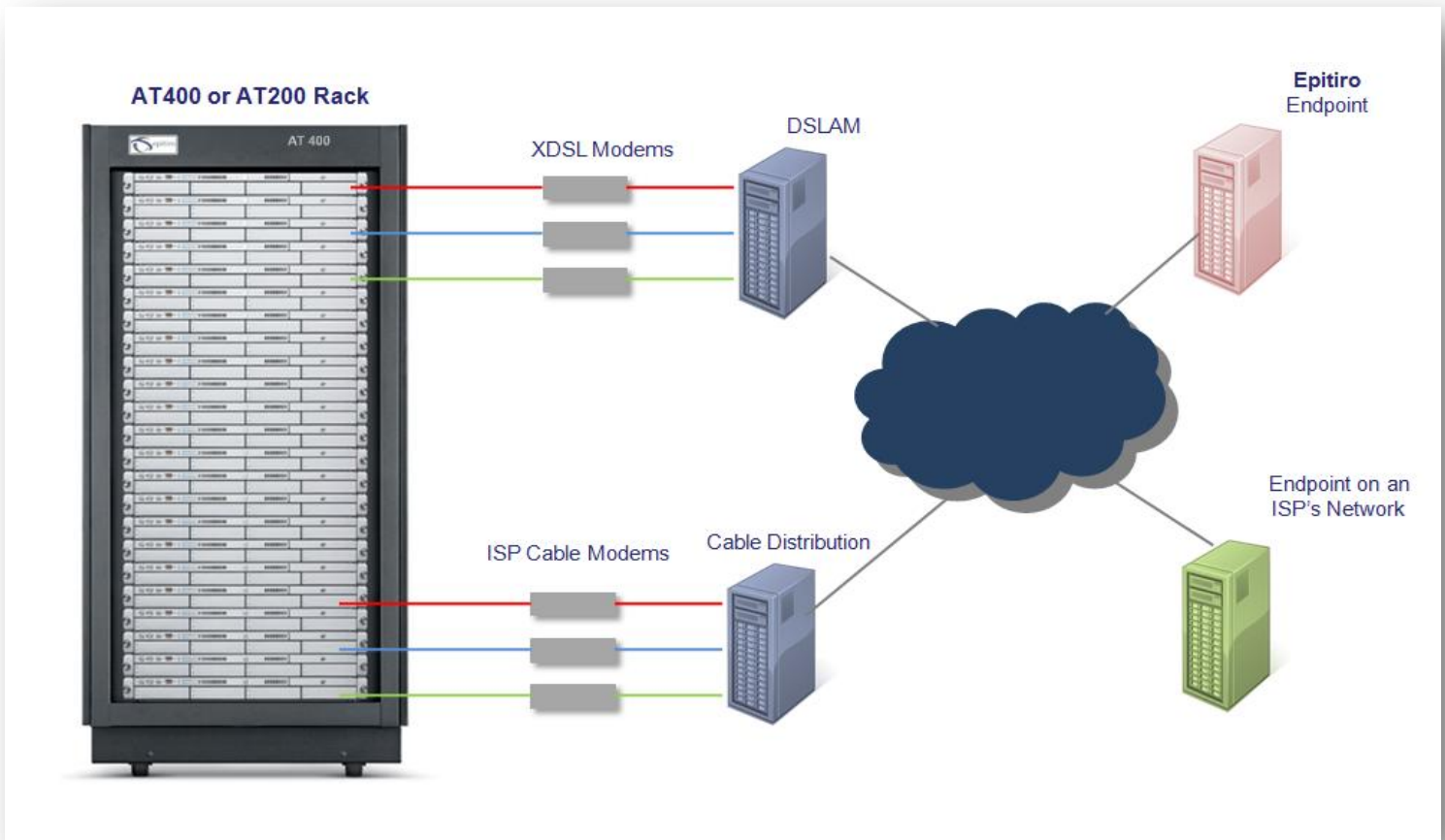


Testing Fixed Line Networks



Typical AT400 or AT200 Installation

Introduction

ISP-I software and hardware probes can be configured in various scenarios to execute testing of Fixed Line broadband networks.

The AT400 (AT200) can be configured as a consumer's PC that auto-connects to the internet and execute the full suite of Epiro's testing capability.

The scenario below shows a series of AT400's in a rack each dedicated to a different ISP service that tests to either an Epiro or ISP endpoint. The benefit of this setup scenario is that tests beyond those in the Broadband Test Application capability such as Synchronization Speed, Email performance, PSTN and VoIP analysis can be executed. This is because Epiro has full control of both the 'customer' ends as well as the endpoints.

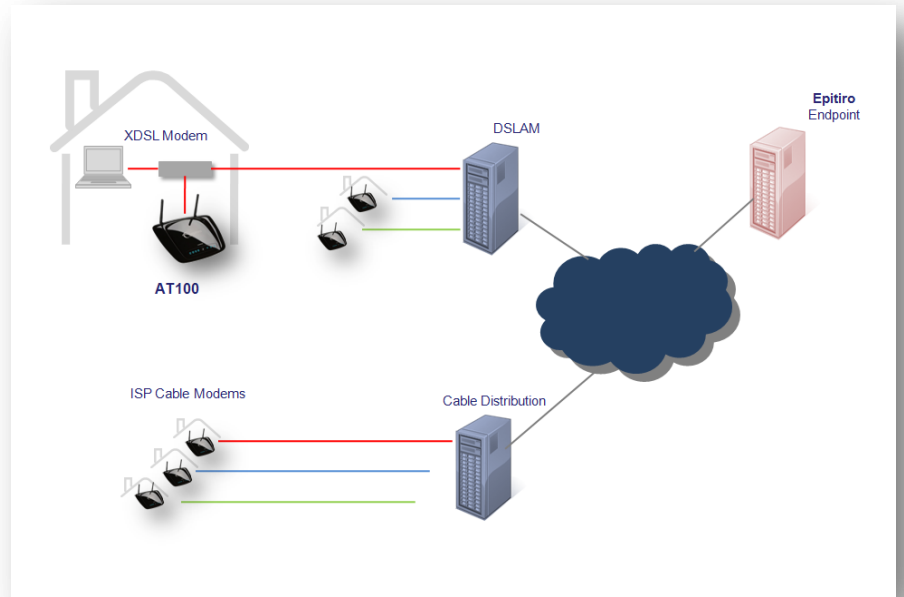
When used in this scenario the AT400 can be used for network management, testing line capability or comparative benchmarking.

Note that the AT400 can be configured to connect to either an Epiro endpoint for equal comparisons between ISPs (benchmarking) or an endpoint installed on the client's network for understanding on-net capability.

Consumer Experience Testing with the AT100

The AT100 tests fixed line broadband performance from an actual consumer premises. It connects to the in-home modem (cable or fixed) and executes tests whenever the broadband line is idle. The lower hardware cost of the AT100 compared to the AT400 makes it more suitable for a higher volume of distribution.

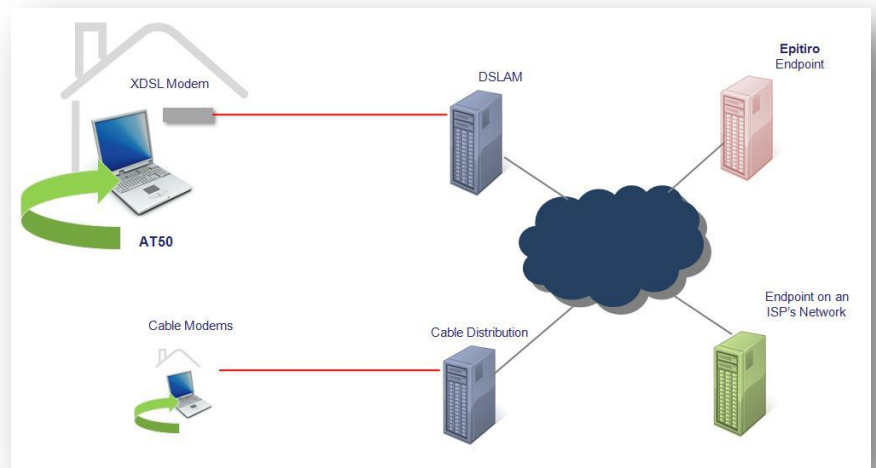
Like the AT400, the AT100 can be connected to various ISPs to acquire a comparative view of ISPs.



Consumer Experience Testing with the AT50

The AT50 downloads and installs from a bespoke website – either from Epiteiro, an ISP or Regulator – to panellist computers and executes the Broadband Test Application during idle periods. As it is software based it has the benefit of very low deployment costs and thus scales from hundreds to thousands of installations.

Because of the high deployment possibilities, the AT50 can be used to field trial new services, understand services on a widespread geographic and demographic basis and also be used for comparative benchmarking of services.



Please contact us directly to learn more about Epiteiro's test capabilities.

Epiteiro Ltd
10/11 Raleigh Walk
Waterfront 2000
Brigantine Place
Cardiff, UK
CF10 4LN
+44 (0)870 850 6563
www.epitiro.com